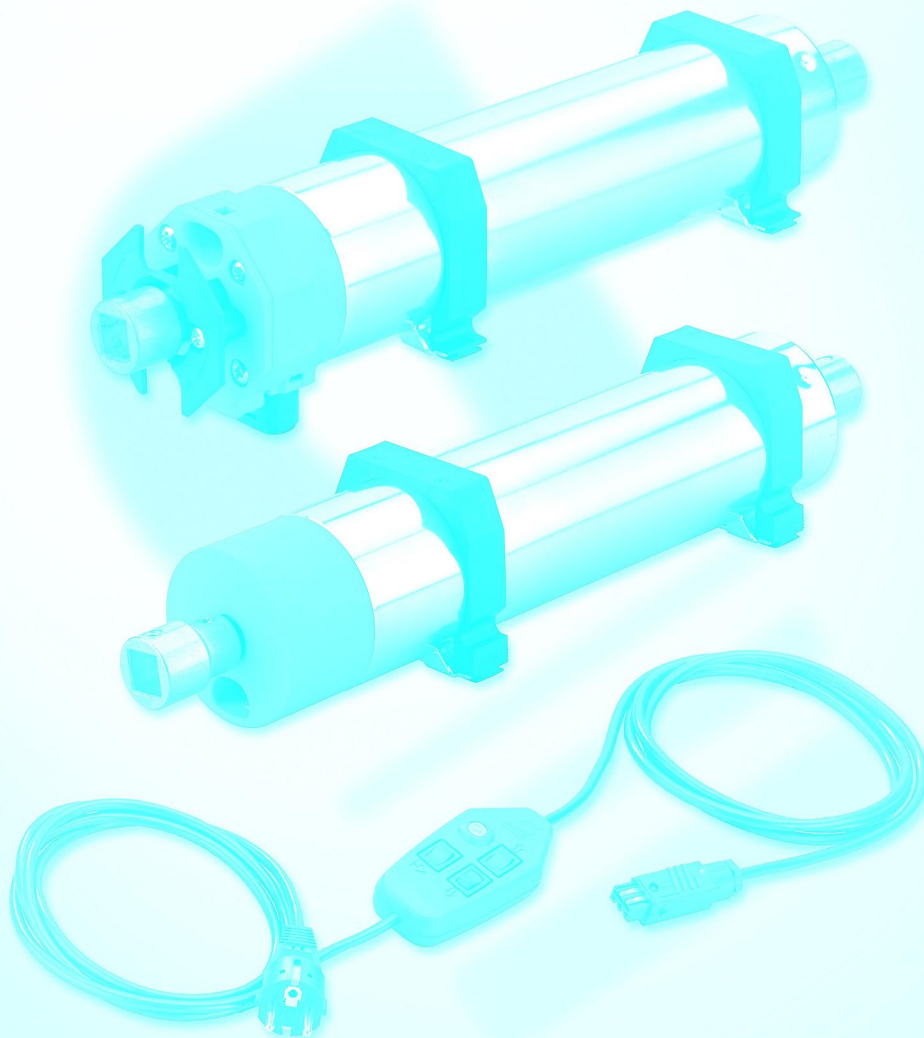


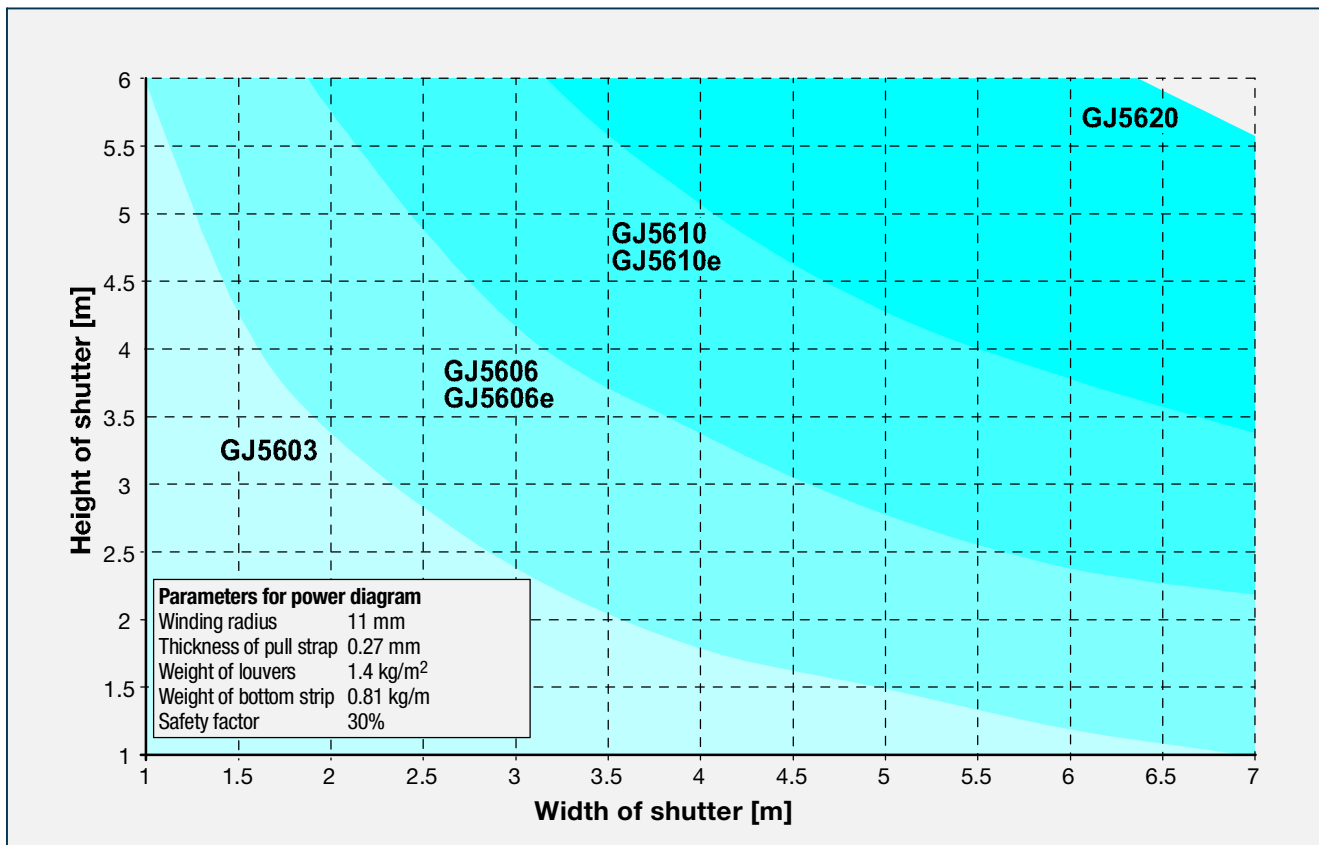
ELECTRIC DRIVE

Electric Drive for Venetian blinds



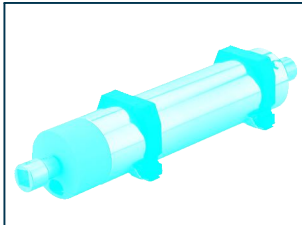


How to find the right GEIGER electric drive



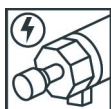
New products

General view of our new items



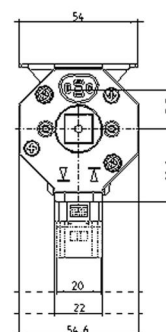
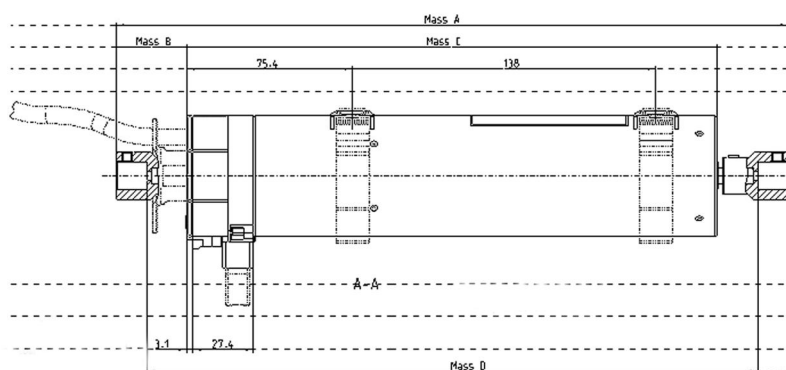
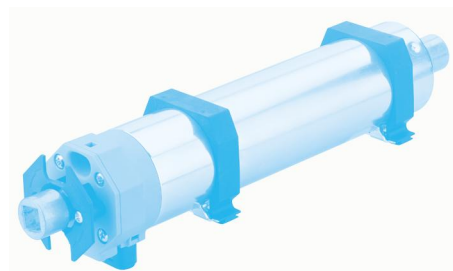
GJ56..e
Electric drive for Venetian blinds

[see page 5](#)



Motor for Venetian blinds

- easy adjustment of the end stops by means of self-locking buttons
- safe fitting in all current haed rails - no tools needed
- removable cable
- available with 3, 6, 10 and 20 Nm torque



	MASS_A	MASS_B	MASS_C	MASS_D
GJ5603	307	31	245	279
GJ5606	307	32	241	277
GJ5610	311	32	246	281
GJ5620	338	32	273	310

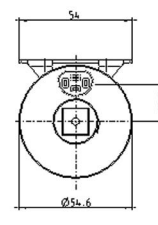
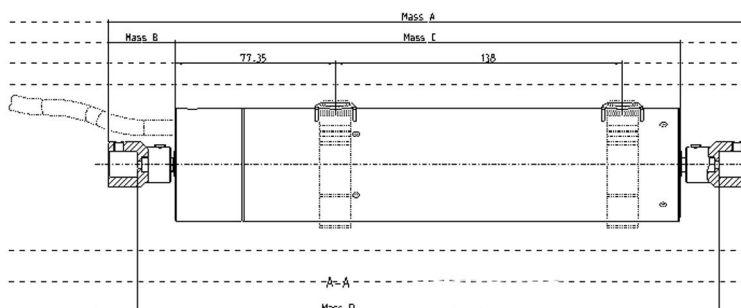
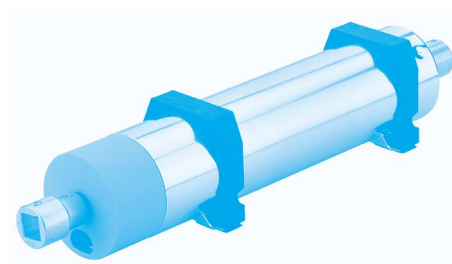
GJ56.. with mechanical end stop

Description	GJ5603	GJ5606	GJ5610	GJ5620
Voltage	230V~/50Hz	230V~/50Hz	230V~/50Hz	230V~/50Hz
Current	0,47 A	0,4 A	0,6 A	0,85 A
Power	105 W	90 W	135 W	190 W
Torque	3 Nm	6 Nm	10 Nm	2 x 10 Nm
Speed	26 1/m	26 1/m	26 1/m	26 1/m
Operating mode	KB 5 min	KB 6 min	KB 4 min	KB 4 min
Protection class	IP 44	IP 44	IP 44	IP 44
Limit switch range	80 rotations	80 rotations	80 rotations	80 rotations
Length (incl. coupling)	about 307 mm	about 307 mm	about 311 mm	about 338 mm
Diameter	55 mm	55 mm	55 mm	55 mm

Motor for Venetian blinds



- three end stops, easy to adjust with the remote control cable
- overload recognition to protect the blinds of any damage
- parallel connection of several motors is possible without cut-off relay
- connection by means of a current switch for Venetian blinds. If a working position is needed, a non-lock switch should be used.
- available with 6 und 10 Nm torque



	MASS A	MASS B	MASS C	MASS D
GJ5606E	308	32	24.3	280
GJ5610E	313	32	24.8	285

GJ56..e with electronic end stop

Description	GJ5606e	GJ5610e
Voltage	230V~/50Hz	230V~/50Hz
Current	0,4 A	0,6 A
Power	90 W	135 W
Torque	6 Nm	10 Nm
Speed	26 1/m	26 1/m
Operating mode	KB 6 min	KB 4 min
Protection class	IP 54	IP 54
Limit switch range	200 rotations	200 rotations
Length (incl. coupling)	about 308 mm	about 313 mm
Diameter	55 mm	55 mm



Accessories M56....

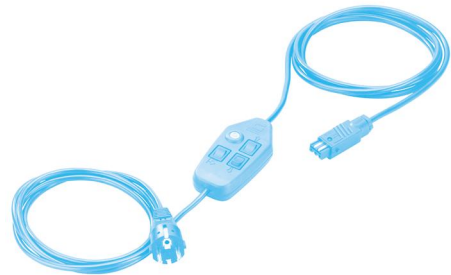
Limit stop switch M56F590 (long) / M56F591 (short)

long and short version



Remote control cable M56K144

Remote control cable
for motor for Venetian blinds GJ56..e with electronic end stop



Connecting cable M56E195 (900 mm) / M56E196 (500 mm)

Connecting cable
incl. Hirschmann plug Stas 3K
length: 500 mm or 900 mm



Accessories M56....



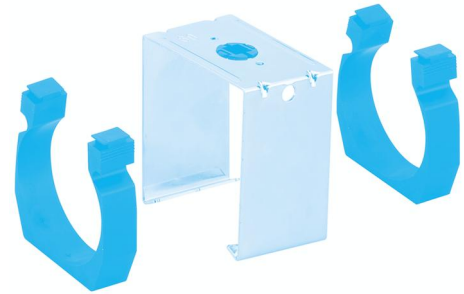
Assembly kit M56F580 / M56F581 / M56F582

Assembly kit

for 29/51, 29/56 and 30,5/51 head rails
(axle height/axle height)

(axle height/axle height)
29/51 M56F580
29/56 M56F581
30,5/51 M56F582

Attention: 2 fixing brackets are necessary when using a 20 Nm motor.



Coupling pieces M56K061 / M56K063 / M56K064

Coupling pieces

14 mm grooved tube, 7 mm, 10 mm and 11 mm hexagonal, 7 mm and 12 mm square



Gerhard Geiger GmbH & Co.

Gerhard Geiger GmbH & Co.

Schleifmühle 6
D-74321 Bietigheim-Bissingen

Phone +49 (0) 71 42 / 9 38-0
Fax +49 (0) 71 42 / 9 38-230

info@geiger-antriebstechnik.de
www.geiger-antriebstechnik.de

